



PACON

EXPLORATORY
PROJECT
2020-2022

Coordination

Kevin Morel,
UMR SADAPT
kevin.morel@
inrae.fr

Keywords

Knowledge
Semantic Web Design
User
Open access

Knowledge sharing through digital technology for the (re)design of organic farms

Digital technology could play an important role in the organic agriculture scale change by promoting sharing and the mobilization of knowledge to (re)design organic systems within a diversity of contexts.

The project addresses three questions central to this development:

- What are the types and structures of knowledge and the interfaces necessary to facilitate the (re)design of organic farms via digital technology?
- How can we ensure the interoperability of knowledge and tools for different uses, at different scales (plot, crop system, farm)?
- What are the brakes and levers involved in the creation of a community of stakeholders dedicated to the use of digital tools in open access to further organic agriculture?

METABIO



Contact METABIO
metabio@inrae.fr



Participating INRAE units

Agronomy, Grignon

LISIS, Marne-la-Vallée

SADAPT, Grignon

TSCF, Clermont-
Ferrand

Partners

Educagri Editions,
publisher

ACTA

SAS Elzeard

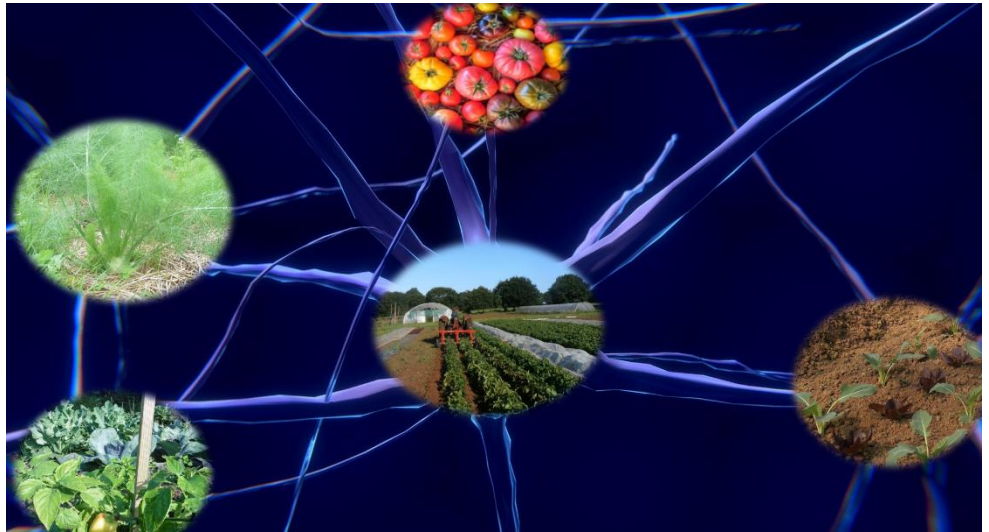
ITAB

Bio Occitanie

FRAB Bretagne

AFAUP

Independent
designer



Our project is based on an interdisciplinary partnership between agronomy, ergonomics, artificial intelligence, and scientific and technical information.

Focused on the production of organic vegetables, the project will capitalize on two examples of digital tool development in progress at INRAE, based on participative approaches (GECO and Mesclun). This case study will be supplemented with a state of the art and an analysis of a seminar with theme-based workshops that will include experts and professionals from the agricultural and digital sectors.

The project will provide methodological and conceptual elements to analyze and support digital technology within the framework of organic agriculture. It will contribute to establishing relationships between researchers (inside and outside of INRAE) and professionals, which will be the basis for broader future partnerships at the international scale.

METABIO



Contact METABIO
metabio@inrae.fr