



TRANS-BIO-CONNECT

CONSORTIUM
2020-2022

Coordination

Isabelle Souchon,
UMR SQPOV
isabelle.souchon@
inrae.fr

Keywords

Processed fruits and
vegetables
Service design
Coupled innovations
Agricultural production
Consumption

Connecting organic fruit and vegetable processing in a “dynamic” continuum between agricultural production and consumption

The current processing model makes it possible to partially satisfy the growing consumer demand for organic products. It was designed by imposing a reduction of the variability of raw agricultural materials that does not respond to the specificities of organic agriculture (OA) or of the “notions” of biodiversity, seasonality, naturalness and respect for the product in its entirety that are associated with it.

The aim of the consortium is to study the organic fruit and vegetable sectors and to explore the reconnection possibilities for different processes, products and consumption in order to develop healthier and more sustainable agri-food systems.

METABIO



Contact METABIO
metabio@inrae.fr

Participating INRAE units

AGRONOMY, Grignon

ALISS, Ivry-sur-Seine

BIA, Nantes

ECODEVELOPMENT,

Avignon

EREN, Bobigny

GAEL, Grenoble

IDEAS network

ITAP, Montpellier

LISIS, Marne-la-Vallée

MOISA, Montpellier

PECH ROUGE, Gruissan

PSH, Avignon

SQPOV, Avignon

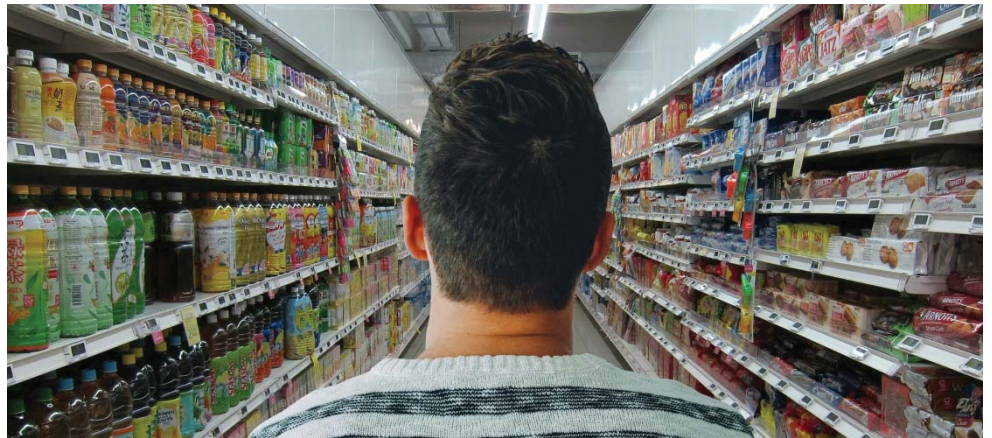
SAYFOOD, Grignon

SADAPT, Grignon

Partners

ITAB, IFPC, CRITT PACA,

CTCPA, GRAB



The approach brings together the expertise, diagnostics and co-design necessary to identify:

- services that could be provided by processing, e.g., maintaining biodiversity or optimizing the management of co-products;
- obstacles and levers to be implemented to facilitate these services;
- research issues to eliminate these obstacles and to develop levers.

The disciplines mobilized include ecophysiology, agronomy, microbial ecology, the food sciences, nutrition, nutritional epidemiology, process engineering, ergonomics, the management and design sciences, economics, sociology and the consumer sciences. This assessment and the partnerships established will be the foundation for the construction of research and research-development projects at the national and international scales.

METABIO



Contact METABIO
metabio@inrae.fr